



LOGISTICS TRAINING COUNCIL

Heavy Vehicle Licencing and Training: A New Framework

Jillian Dielesen

HVISTA Strategic Plan

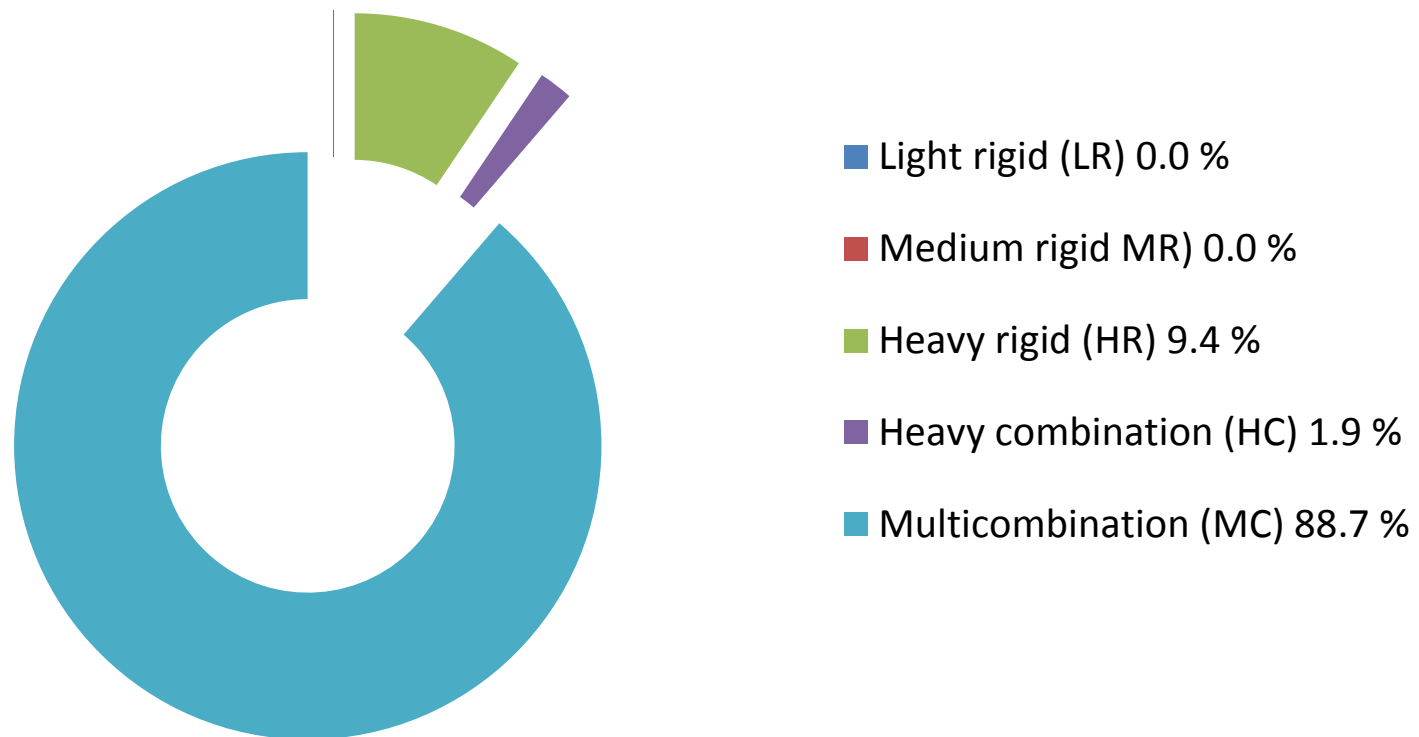
- Creation of heavy vehicle driver survey to gauge current knowledge
- Analyse uptake of training
- Skills set for licence
- Education of all road users

Survey Overview

- Online and paper based survey
- 26 questions
- Designed to gauge competency level of drivers
- 59 respondents

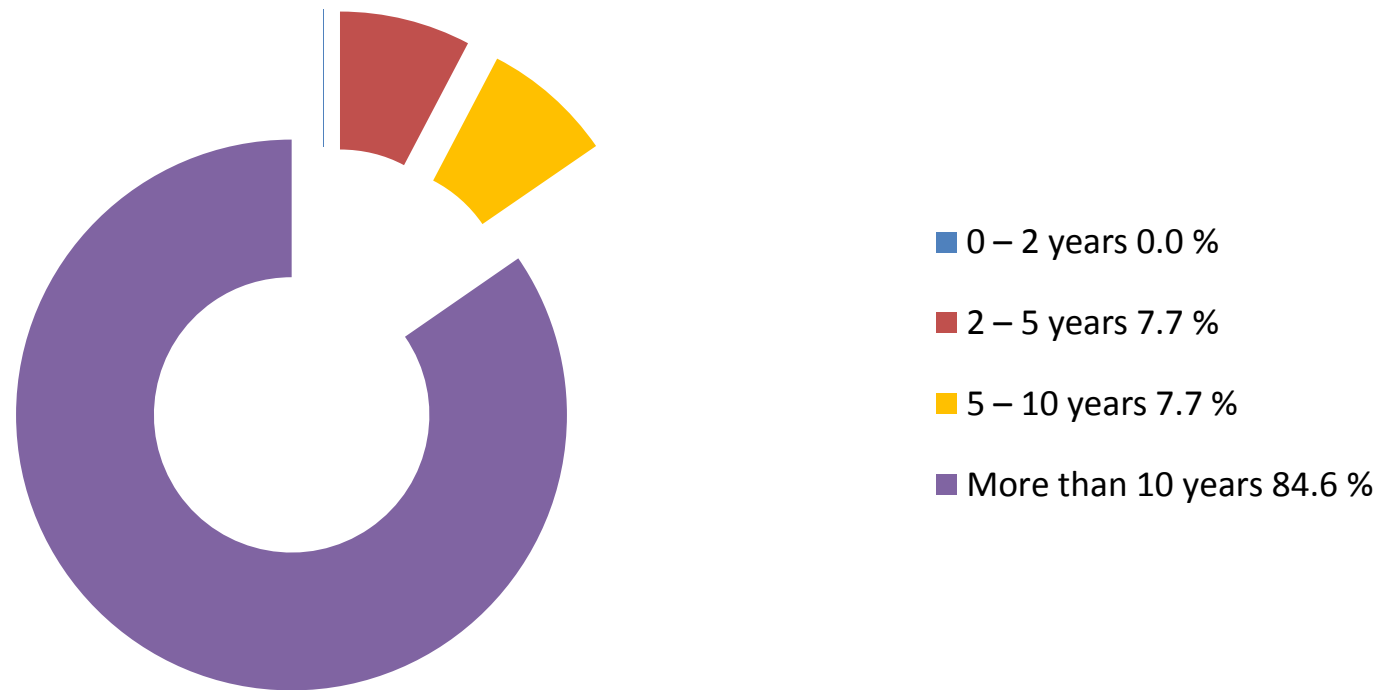
Licence Type

What is the highest licence you hold?

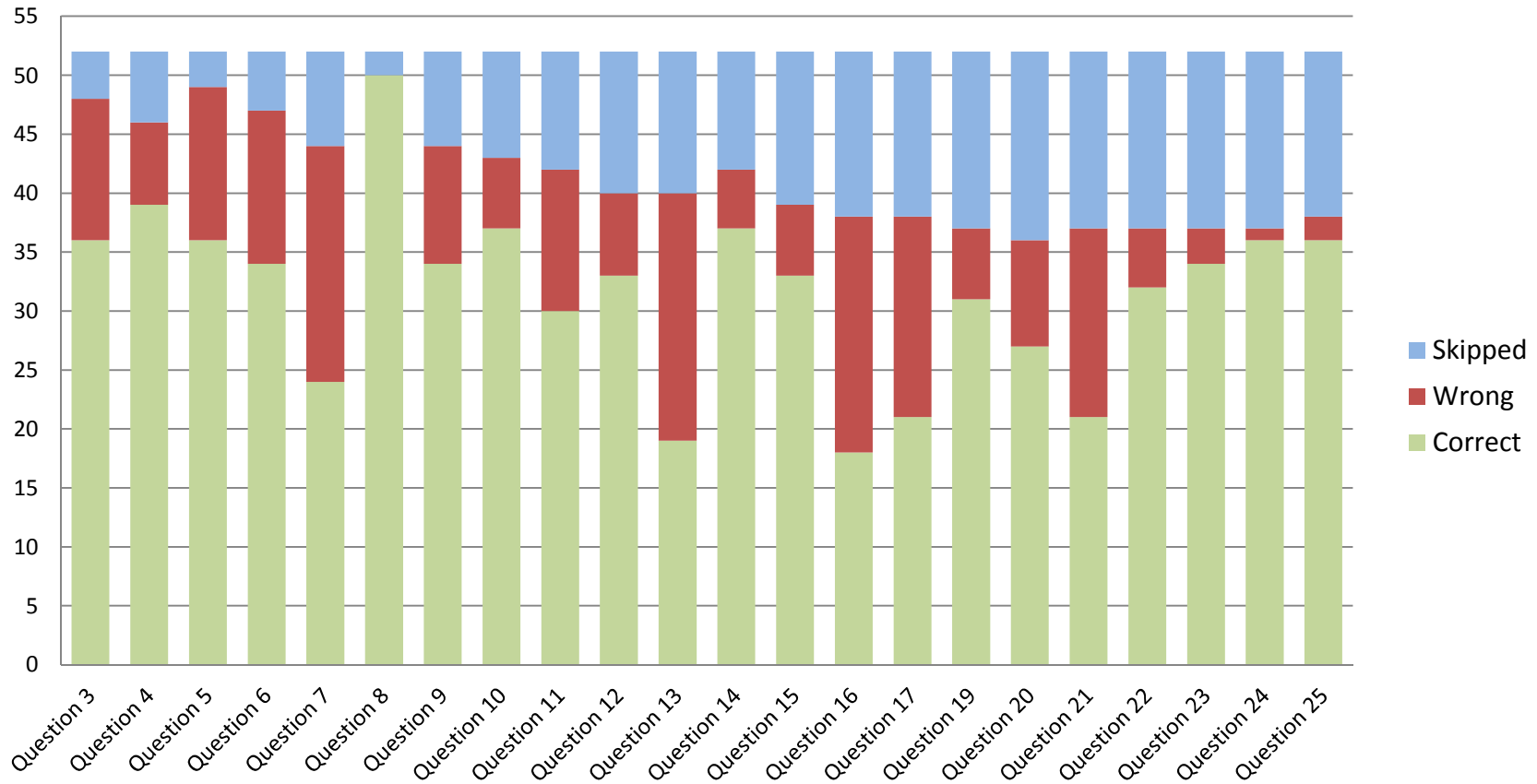


Level of Experience

How long have you held a truck licence?



Driver Survey Responses



What's Next?

- Send findings to Main Roads
- Update Government stakeholders
- Investigate Licensing options

Projects

The TLI Transport and Logistics IRC have oversight of the following two projects

- Development of a new Transport and Logistics Scheduling qualification
- Review of the TLI21716 Certificate II in Road Transport Yard Operations (Freight Handler) qualification

Certificate IV in Transport Scheduler

- 14 units
- 6 core units in total comprising four units listed below plus one of the GROUP A specialist units (fatigue risk management) and one of the GROUP B specialist units (Regulatory)
- 8 general elective units
- Up to 3 of the general elective units

Core Units

- TLIXXXX Optimising delivery service
- TLIXXXX Effective contingency planning
- TLIXXXX Staff and resource allocation
- TLIXXXX Effective stakeholder communication in the transport sector

- Plus one from Group A and one from Group B

Certificate II in Road Transport Yard Operations (Freight Handler)

- Traineeship approved by Minister
- Funded traineeship for new entrants
- Available as a School Based Traineeship
- Promoted as a pathway into the road transport industry by the LTC
- AIS reviewing qualification to meet industry needs

Current Draft

- 16 units
- 9 core
- 1 specialist elective
- 6 general electives (up to 2 from any other training package)

Core Units

- TLID1001 Shift materials safely using manual handling methods
- TLIE1003 Participate in basic workplace communication
- TLIE1005 Carry out basic workplace calculations
- TLIF1002 Conduct housekeeping activities
- TLIE200X Process workplace Information
- TLIF0001 Apply chain of responsibility legislation, regulations and workplace procedures
- TLIF1001 Follow work health and safety procedures
- TLIXXX Introduction to the transport industry
- TLIL1001 Complete workplace orientation/induction

Specialist Electives

Plus, one of the GROUP A Specialist electives units (fatigue management)

- TLIF2010 Apply fatigue management strategies
- TLIF0005 Apply a fatigue risk management system

Imported Units

- AURHTJ1001 Inspect heavy commercial vehicle wheels and tyres
- AURLTA1001 Apply automotive mechanical system fundamentals
- AURVTA005 Clean vehicles

To Provide Feedback

- www.logisticstc.asn.au
- www.australianindustrystandards.org.au

Goldfields Regional Labour Market Review – DTWD

- Any skill or labour shortages being experienced locally in Kalgoorlie?
- What is the general age demographic of the workforce?
- Are there many migrant workers (employed on visas?)
- In which areas/sectors could traineeships be boosted?

Jillian Dielesen

Logistics Training Council
17 Lemnos Street
Shenton Park 6008

Phone – 08 9388 8781

E-mail – jillian@logisticstc.asn.au

www.logisticstc.asn.au

